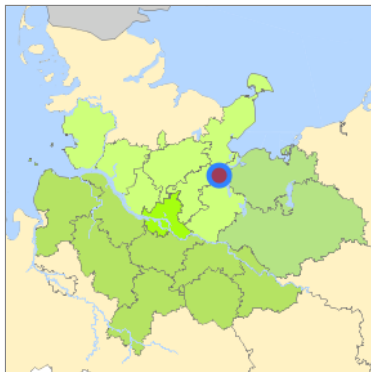
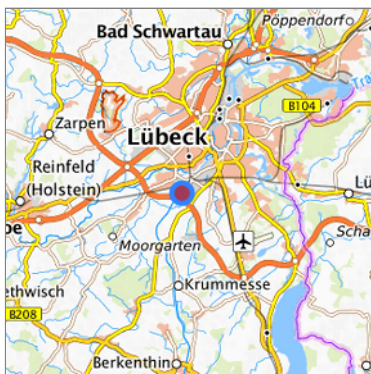


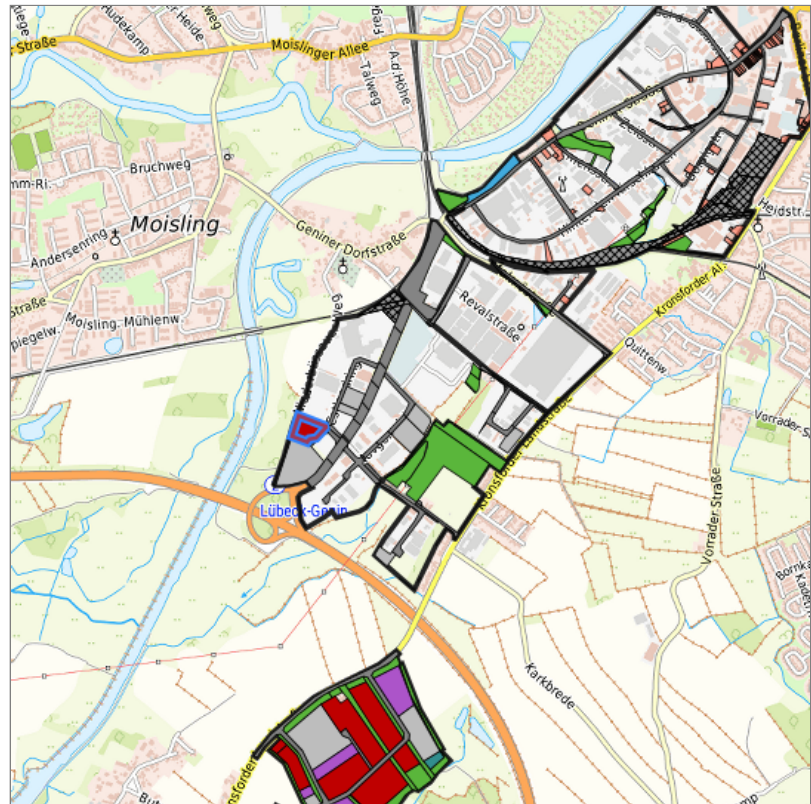
Genin-Süd (208) at Lübeck, Kreisfreie Stadt Lübeck



???
expose.map.uebersicht.Hansebelt???



Location in the requested region



Detailed view of the requested site

Legend

Availabilities

- | | | |
|---|--|---|
|  Immediately |  short term (2 years) |  medium term (2-5 years) |
|  long-term (> 5 years) |  optional area (bindingly reserved) |  occupational pension plan |
|  not available | | |

Brief description

Description of the parcel
Municipality/city

Genin-Süd
Lübeck

Parcel

Property size (m ²)	11,620.39
Availability	immediately available
focus use	brownfield site
further use	unavailable

Legal planning situation

Commercial space secured by planning permission	Yes
Building area according to land use plan	commercial building area
Existing planning law	§30 BauGB (qualified development plan)

Type and extent of building and land use

Specific type of structural use	GE
Development situation	fully accessible
24-hour operation	Yes
possible site occupancy ratio	0.8
possible floor area figure	No information
possible number of full floors	No information
possible height of building structures	27
cubic index	No information

Exclusions/restrictions of land use

restrictions to mobilization	None
------------------------------	------

Infrastructur of site

broadband availability (at least 50 MBit/s)	Yes
quay edge	No
quay edge with sea-going vessel deep water	No
direct rail connection	No
electricity connection	Yes
gas connection	Yes
water connection	Yes
wastewater connection	Yes

Proprietary situation and marketing intention

proprietary situation	Public
Owner	Dr. Ralph Bruns KWL GmbH Prokurist Falkenstr. 11 23564 Lübeck +49 (451) 79888 - 55 bruns@luebeck.org http://www.kwl-luebeck.de

Detailed information about commercial zone

Gross surface area (ha)	96.2907
Sector focus	other services , logistics industry and storage , food industry , construction industry , business-related services , wholesale , manufacture of computer, electronic and optical products
Type of location of commercial estate	classic commercial estate , location for knowledge-oriented industry and services , location for crafts and small-scale trades

Transport accessibility

Motorway	A 20	1.0 km
Motorway	A 1	5.0 km
Motorway	A 226	13.2 km
Motorway	A 21	25.1 km
Motorway	A 24	37.5 km
Main road	B 75	3.0 km
Main road	B 207	3.2 km
International airport	Flughafen Hamburg	56.0 km
International airport	Flughafen Rostock	118.4 km
Regional airport	Flughafen Lübeck	7.7 km
Regional airport	Schwerin-Parchim	108.3 km
Commercial airfield	Hartenholm	49.1 km
Commercial airfield	Neumünster	61.6 km
Commercial airfield	Wismar	64.4 km
Commercial airfield	Uetersen/Heist	81.8 km
Commercial airfield	Hungriger Wolf	86.5 km
Port	Port of Lübeck	7.3 km
Port	Binnenhafen Mölln	27.6 km
Port	Gewerbehafen Neustadt i.H.	36.0 km
Port	Binnenhafen Geesthacht	59.8 km
Port	Binnenhafen Lauenburg	60.7 km
Rail freight traffic	Lübeck Nordlandkai (trimodal)	8.0 km
Rail freight traffic	Lübeck Konstinkai	8.5 km
Rail freight traffic	Lübeck Schlutup (trimodal)	12.3 km
Intermodal terminal	Cargo-Terminal Lehmann (Lübeck, trimodal)	13.9 km
Intermodal terminal	Baltic Rail gate (Lübeck, trimodal)	19.6 km
Intermodal terminal	DUSS Terminal Hamburg Billwerder (FHH)	60.8 km
Rail passenger transport	Lübeck-St.Jürgen	5.0 km
Rail passenger transport	Lübeck Hbf.	5.2 km
Rail passenger transport	Lübeck-Hochschulstadtteil	5.3 km
Rail passenger transport	Lübeck Flughafen	7.4 km
Rail passenger transport	Herrnburg	10.3 km
Availability of public transport	Available	

Contact

Christoph Bergob-Jachens
Wirtschaftsförderung LÜBECK GmbH
Falkenstraße 11
23564 Lübeck
[+49 \(451\) 706 55 - 24](tel:+494517065524)
bergob-jachens@luebeck.org
<http://www.luebeck.org>